

ISO	TopPlan	Design ID	Count	Description	Resp	Comments
		11589	1	SIGN - STACKED ILLUMINATED ON RACEWAY - 14IN 355MM	SS	
		13164	2	SIGN - DISK SF ILLUMINATED FLUSH MOUNTED EVOLVED - 60IN 1525MM	SS	
		14091	1	SIGN - DT DIRECTIONAL EXIT SIGN ILLUMINATED ARROW SERIES - 46IN 1170MM	SS	
		14093	2	DT EVOLVED STAR PATTERN	SS	
		14106	1	SIGN - DT CLEARANCE BAR ARROW SERIES FREESTANDING	SS	
		14110	1	SIGN - PYLON DISK DRIVE THRU ILLUMINATED ARROW SERIES - 72IN 1830MM	SS	
		14119	1	MENU BOARD - DT 5 PANEL FREESTANDING - 108X65IN 2745X1650MM - FLAT BLACK MT0028	SS	
		14120	1	MENU BOARD - DT PRE MENU FREESTANDING - 36X65IN 915X1650MM - FLAT BLACK MT0028	SS	
		14163	1	DT ORDER POINT CANOPY FREESTANDING - FLAT BLACK MT0028	SS	
		14323	2	DT WAYFINDING GRAPHIC DIRECTIONAL DOUBLE ARROW - GREEN	SS	
		14327	2	SIGN - DT DIRECTIONAL ILLUMINATED ARROW SERIES - 46IN 1170MM	SS	
		SS01	1	SIGN - DT DIRECTIONAL ARROW - PAINTED ONTO EXTERIOR WALL FINISH	SS	

### GENERAL NOTES

- PROVIDE 3" (75MM) HIGH BLACK ACRYLIC STORE ADDRESS ON GLAZING OR PER LOCAL JURISDICTIONAL CODE REQUIREMENTS.
- MAIN ENTRANCE.
- SIDE ENTRANCE.
- ARTWORK XG01 SB LOGO ON EXTERNAL SCREEN. SEE GRAPHICS AND ARTWORK SCHEDULE ON I-105 FOR DETAILS.
- MANIFESTATION DOTS TO FULL HEIGHT WINDOWS.

NOTE:  
LICENSEE'S PM TO CONFIRM ALL DIMENSIONS ON SITE AND ADVISE STARBUCKS OF ANY CHANGES.

- CM CONSTRUCTION MANAGER
- GC GENERAL CONTRACTOR
- LL LANDLORD
- SBUX STARBUCKS
- WH STARBUCKS WAREHOUSE (3PL)
- VD STARBUCKS VENDOR DIRECT
- CS CASEWORK SUPPLIER
- FZ FRANCHISEE
- AS ARTWORK SUPPLIER
- SS SIGNAGE SUPPLIER

### EXTERIOR ELEVATION NOTES

- GENERAL CONTRACTOR TO COORDINATE AND SCHEDULE SIGNAGE INSTALLATION WITH THE SIGNAGE CONTRACTOR PROVIDING A MINIMUM SCHEDULING NOTICE OF 4 WEEKS AND 1 WEEK PRIOR TO SCHEDULED DATE OF INSTALLATION. STARBUCKS CONSTRUCTION MANAGER TO PROVIDE GENERAL CONTRACTOR WITH SIGNAGE CONTRACTOR CONTACT INFORMATION.
- GENERAL CONTRACTOR SHALL COORDINATE WITH ELECTRICAL CONTRACTOR TO FURNISH AND INSTALL ELECTRICAL CIRCUITS INCLUDING ALL CONDUIT, WIRE, CONNECTIONS, AND BREAKER AT PANEL BOARD NECESSARY TO SERVE SIGNAGE.
- GENERAL CONTRACTOR TO PROVIDE FIRE TREATED WOOD STUD BLOCKING, OR EQUIVALENT TO SUPPORT SIGNAGE.
- SIGNAGE CONTRACTOR SHALL VERIFY SIZE AND LOCATION OF ANY AND ALL ALLOWABLE MONUMENT OR POLE SIGNAGE WITH LANDLORD AND PROVIDE SHOP DRAWING (S) PRIOR TO FABRICATION TO STARBUCKS DESIGNER FOR APPROVAL.
- SIGNAGE CONTRACTOR TO INSTALL SIGNAGE IN COMPLIANCE WITH LOCAL JURISDICTIONAL REQUIREMENTS AND OBTAIN PERMIT AND LANDLORD APPROVAL.
- SIGNAGE CONTRACTOR TO SUPPLY SHOP DRAWINGS TO STARBUCKS CONSTRUCTION MANAGER AND TO THE GENERAL CONTRACTOR AS NEEDED. GENERAL CONTRACTOR TO NOTIFY STARBUCKS CONSTRUCTION MANAGER IMMEDIATELY IF SHOP DRAWINGS OR INSTALLATION IS IN DISCREPANCY WITH STARBUCKS ARCHITECTURAL DRAWINGS.
- GENERAL CONTRACTOR TO CLEAN, PATCH AND REPAIR EXISTING EXTERIOR AS REQUIRED.



**STARBUCKS COFFEE COMPANY**

2401 UTAH AVENUE SOUTH  
SEATTLE, WASHINGTON 98134  
(206) 318-1575

THESE DRAWINGS AND SPECIFICATIONS ARE CONFIDENTIAL AND SHALL REMAIN THE SOLE PROPERTY OF STARBUCKS CORPORATION, WHICH IS THE OWNER OF THE COPYRIGHT IN THIS WORK. THEY SHALL NOT BE REPRODUCED (IN WHOLE OR IN PART), SHARED WITH THIRD PARTIES OR USED IN ANY MANNER ON OTHER PROJECTS OR EXTENSIONS TO THIS PROJECT WITHOUT THE PRIOR WRITTEN CONSENT OF STARBUCKS CORPORATION. THESE DRAWINGS AND SPECIFICATIONS ARE INTENDED TO EXPRESS DESIGN INTENT FOR A PROTOTYPICAL STARBUCKS STORE (WHICH IS SUBJECT TO CHANGE AT ANYTIME) AND DO NOT REFLECT ACTUAL SITE CONDITIONS. NEITHER PARTY SHALL HAVE ANY OBLIGATION NOR LIABILITY TO THE OTHER (EXCEPT STATED ABOVE) UNTIL A WRITTEN AGREEMENT IS FULLY EXECUTED BY BOTH PARTIES.

STARBUCKS TEMPLATE VERSION m2016-05-27

**ARCHITECT OF RECORD**  
THIS DRAWING IS A DESIGN DEVELOPMENT DOCUMENT. SITE SPECIFIC MODIFICATIONS MADE UNDER THE RESPONSIBLE CHARGE OF THE ARCHITECT AND/OR ENGINEER-OF-RECORD WILL BE REQUIRED PRIOR TO USING THIS DOCUMENT FOR BIDDING, PERMITTING, OR CONSTRUCTION.

FOR CONSTRUCTION PURPOSES

PROJECT NAME:  
Greyhound Retail Park

PROJECT ADDRESS:  
Unit 4 Greyhound Retail Park  
Sutton Road, Greyhound Way  
Southend SS25P7

STORE #: 49166  
PROJECT #: 73085-001

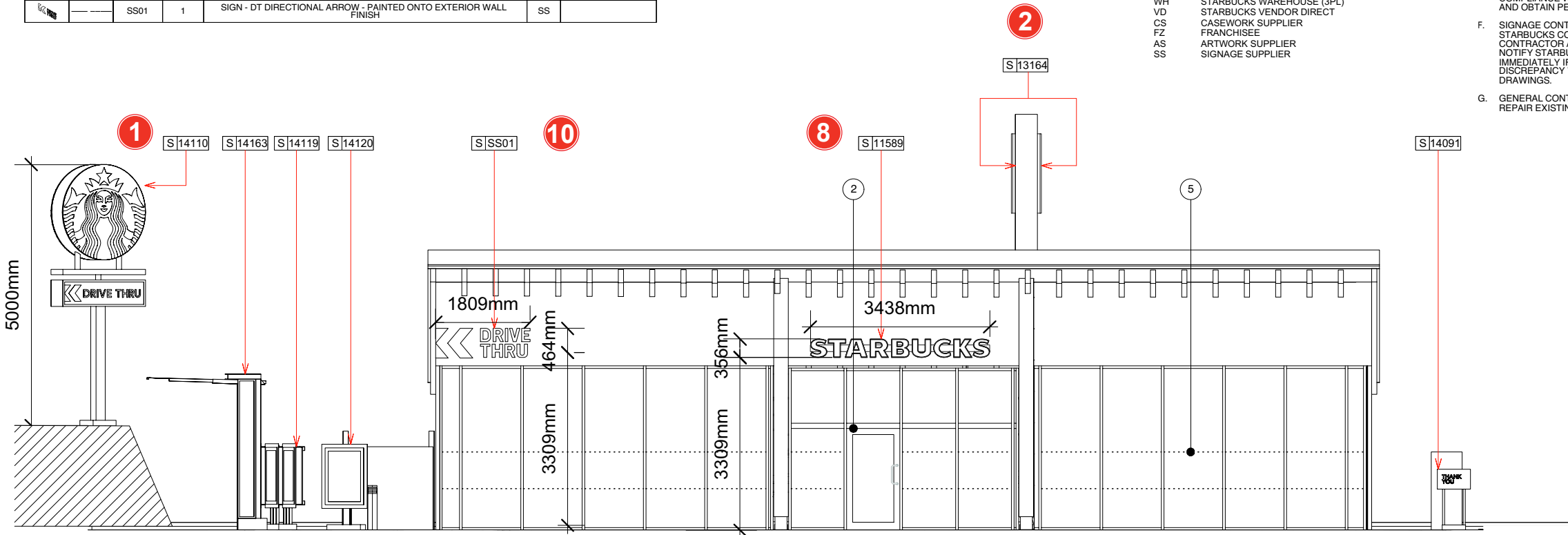
CASEWORK CONCEPT: Casework Concept  
ISSUE DATE: 07/11/17  
DESIGN MANAGER: Duncan Maskell  
LEED® AP: Lead AP  
PRODUCTION DESIGNER: Production Designer  
CHECKED BY: Checked By

Rev	Date	By	Description
A	23/8/17		Revised to comments received 18.08.17
B	5/9/17		Revised to comments received 25.08.17

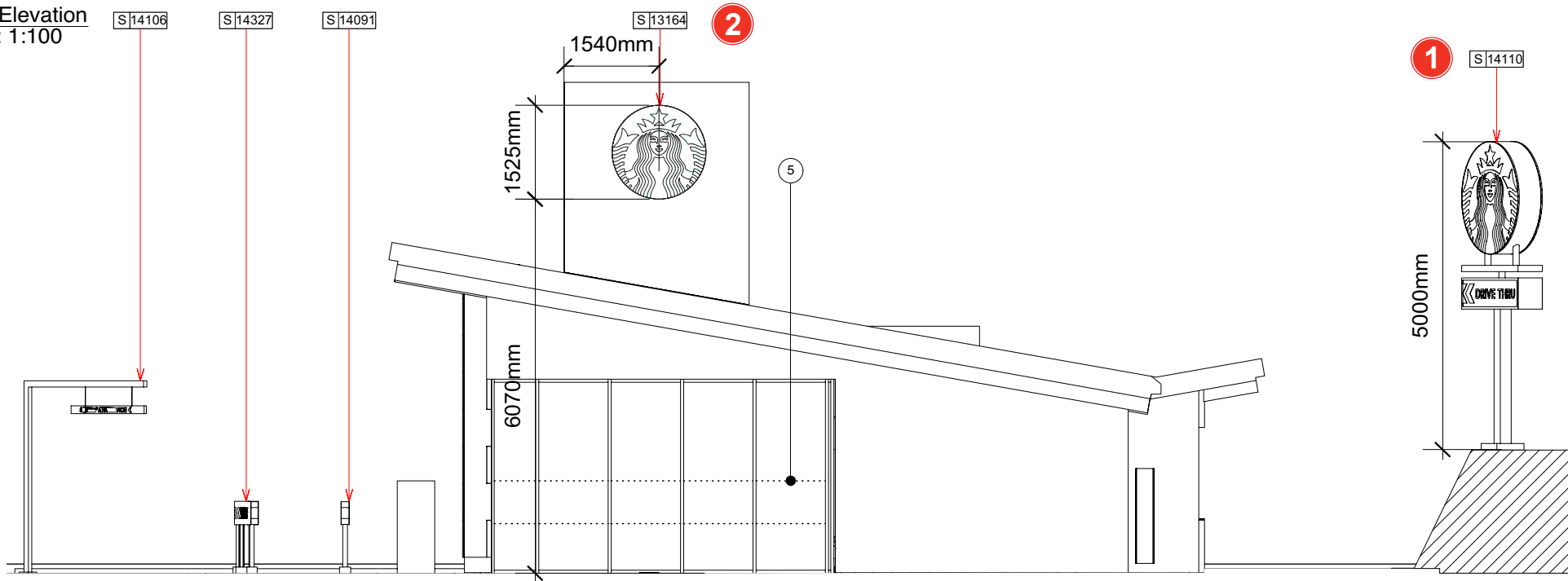
SHEET TITLE:  
Exterior Elevations

SCALE: 1:100

SHEET NUMBER:  
A-2001



1 Front Elevation  
Scale: 1:100



2 East Elevation  
Scale: 1:100



Scale: 1:100